

The image features a repeating herringbone pattern in a light gray color on a white background. The pattern consists of parallel lines that intersect to form a series of 'V' shapes, creating a textured, woven appearance. Centered horizontally and vertically is the word "BOLON" in a bold, black, sans-serif typeface. The letters are evenly spaced and have a clean, modern look.

BOLON

FLOORING 2022



04 \ OWNERS

06 \ MEET OUR PRODUCTS

10 \ BOLON FLOORING NEWS

22 \ COLLECTION; TRULY
Bolon Original Flooring

24 \ COLLECTION; GRAPHIC
Bolon Original Flooring

26 \ COLLECTION; SILENCE
Bolon Original Flooring

28 \ COLLECTION; EMERGE
Bolon Original Flooring

30 \ COLLECTION; CREATE
Bolon Original Flooring

32 \ COLLECTION; ARTISAN
Bolon Original Flooring

34 \ COLLECTION; ELEMENTS
Bolon Original Flooring

36 \ COLLECTION; NOW
Bolon Original Flooring

38 \ COLLECTION; ETHNIC
Bolon Original Flooring

40 \ COLLECTION; BOTANIC
Bolon Original Flooring

42 \ COLLECTION; BKB
Bolon Original Flooring

44 \ BOLON BY PATRICIA
URQUIOLA

46 \ MISSONI HOME

48 \ BOLON BY JEAN NOUVEL

50 \ BOLON STUDIO™
Designing with Bolon tiles

54 \ BOLON BY YOU
Personalize with Bolon By You

56 \ ACOUSTIC FLOORING

58 \ SUSTAINABILITY

62 \ BOLON ADVANTAGES
Beauty with benefits

70 \ CLEANABILITY

74 \ FOLD OUT



**WE
ARE
PROUD** to introduce our new collection, Truly. It tells a story, a story about us. We believe in our design, and we keep our production at home in Ulricehamn, Sweden. This is how we made the impossible possible. We love creating the unexpected, and we love moving forward. This is truly Bolon.”

– MARIE EKLUND, CEO

“We are prouder than ever to present a new circular climate promise. By 2028, all the flooring we produce will be 50% circular and we will halve the climate impact of our flooring. Ambitious and important”

– ANNICA EKLUND, CCO

MEET OUR PRODUCTS

Beauty comes in many shapes and forms. The wide range of Bolon flooring and rugs gives you the freedom to choose product and design combinations, making your project stand out. Our flooring designs come in a variety of collections. The design concepts Bolon Studio and Bolon By You let you create one-of-a-kind designs.

Bolon Truly; #2 / DISRUPT AND DISCOVER!





Bolon By Patricia Urquiola; Nude Sashiko

FLOORING

BOLON ORIGINAL

Bolon Original involves our standard collections, all designed and produced by the Bolon design team in Ulricehamn, Sweden. Our flooring can be produced as rolls, 50x50 cm tiles, planks, and Studio Tiles. The product types available for Bolon Original vary depending on the collection.

BOLON STUDIO

Our Bolon Studio concept allows you to choose from eight additional tile shapes – Deco, Hexagon, Rectangle, Triangle, Scale, Wing, Wave and Link. The Bolon Studio tiles are produced on demand. For further information about tile shapes, see page 50.

BOLON BY YOU

The Bolon By You concept is a simple 3-stage process that allows you to create your own personally designed flooring. It features both roll and tile patterns, four warp, and twelve weft colors not available in our other collections.

COLLABORATIONS

Over the years, Bolon has enjoyed collaborations with Missoni, Jean Nouvel Design, and this year, Patricia Urquiola. Together with these world-renowned designers, Bolon has created collections that reflect both contemporary industrial design and haute couture.

ACOUSTIC FLOORING

Our acoustic flooring offers increased impact sound insulation by reducing the transmission of footstep noise to rooms below. It is thicker, matching other types of flooring. The additional thickness also offers comfort underfoot.

CUSTOMIZE

There are nearly endless design possibilities for creating and customizing Bolon flooring. We can meet most design requests and ideas. Contact our sales staff for information on customized solutions.

MISCELLANEOUS

GREEN WELD

Bolon Green Weld is an innovative cold-welding product that is healthier for the flooring installer. The hazardous chemical THF has been replaced by completely safe and healthy substances.

NO GLUE

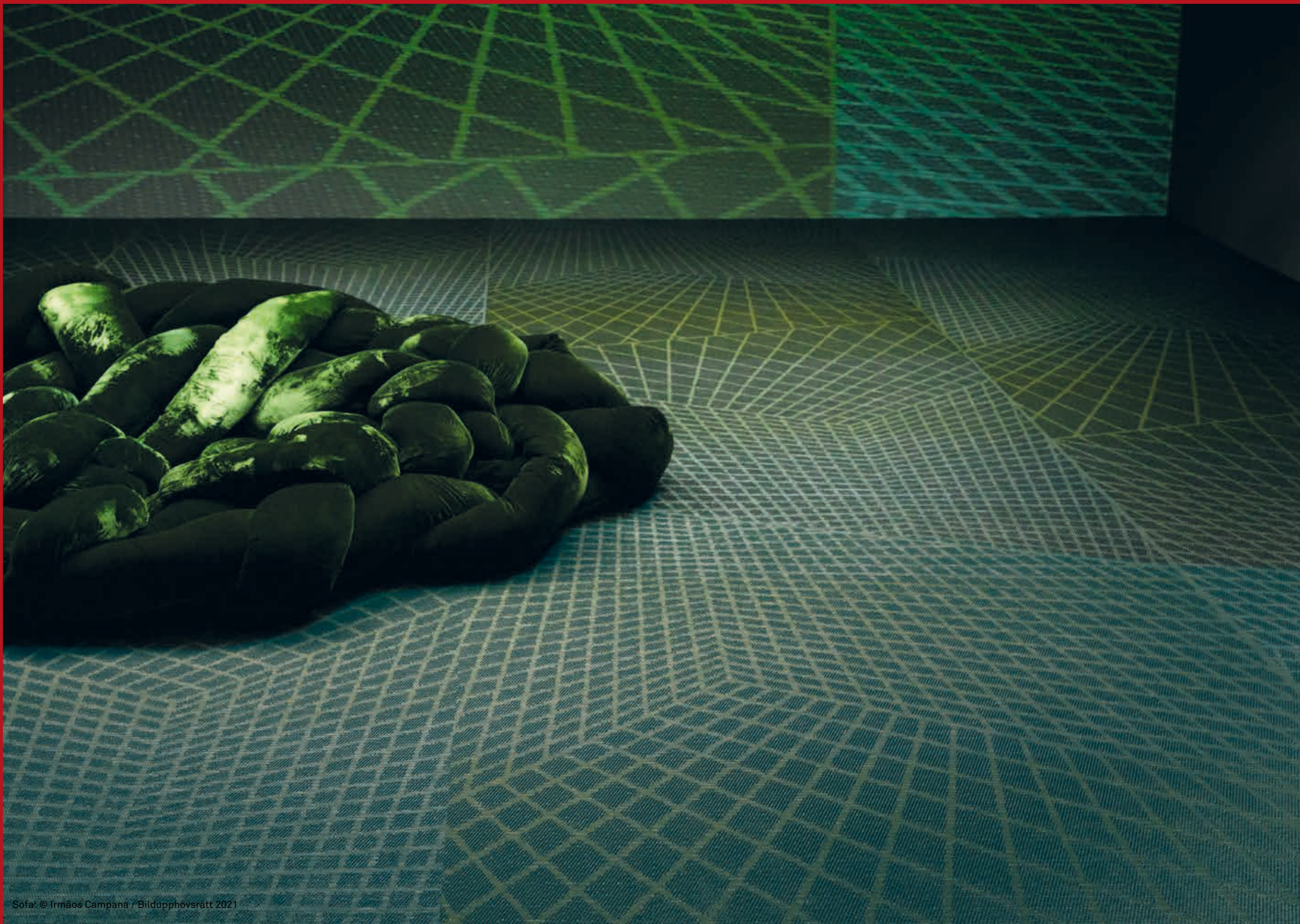
Bolon NoGlue® is a tape that can be used as an alternative to adhesive when installing our tiles and planks wall-to-wall. Using Bolon NoGlue® also makes our flooring recyclable in the future, when it reaches the end of its product life.

BOLON FLOORING – NEWS

We are really happy to introduce Truly, one of our most forward-thinking original flooring collections to date. With the collection, we have conquered technical challenges, pushed ourselves, and in turn, pushed the idea of what woven flooring can be. Truly is indeed a milestone. It is Bolon, down to every single molecule.

Bolon Truly; #2 / DISRUPT AND DISCOVER!





Sofa: © Irmãos Campana / Bildupphovsrätt 2021

Bolon Truly; # 1 / ANYTHING EVERYTHING.

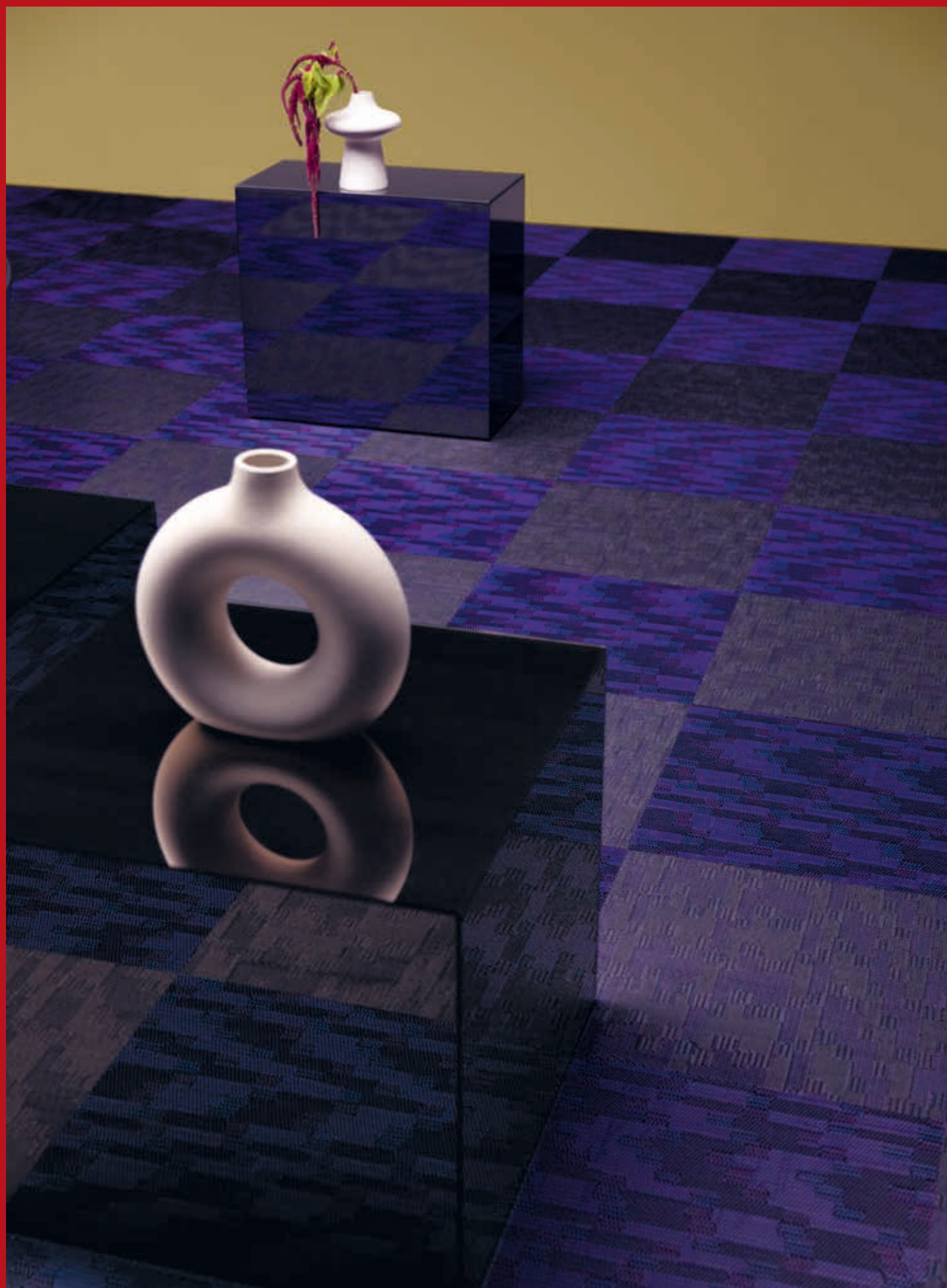


FLOORING NEWS 2022

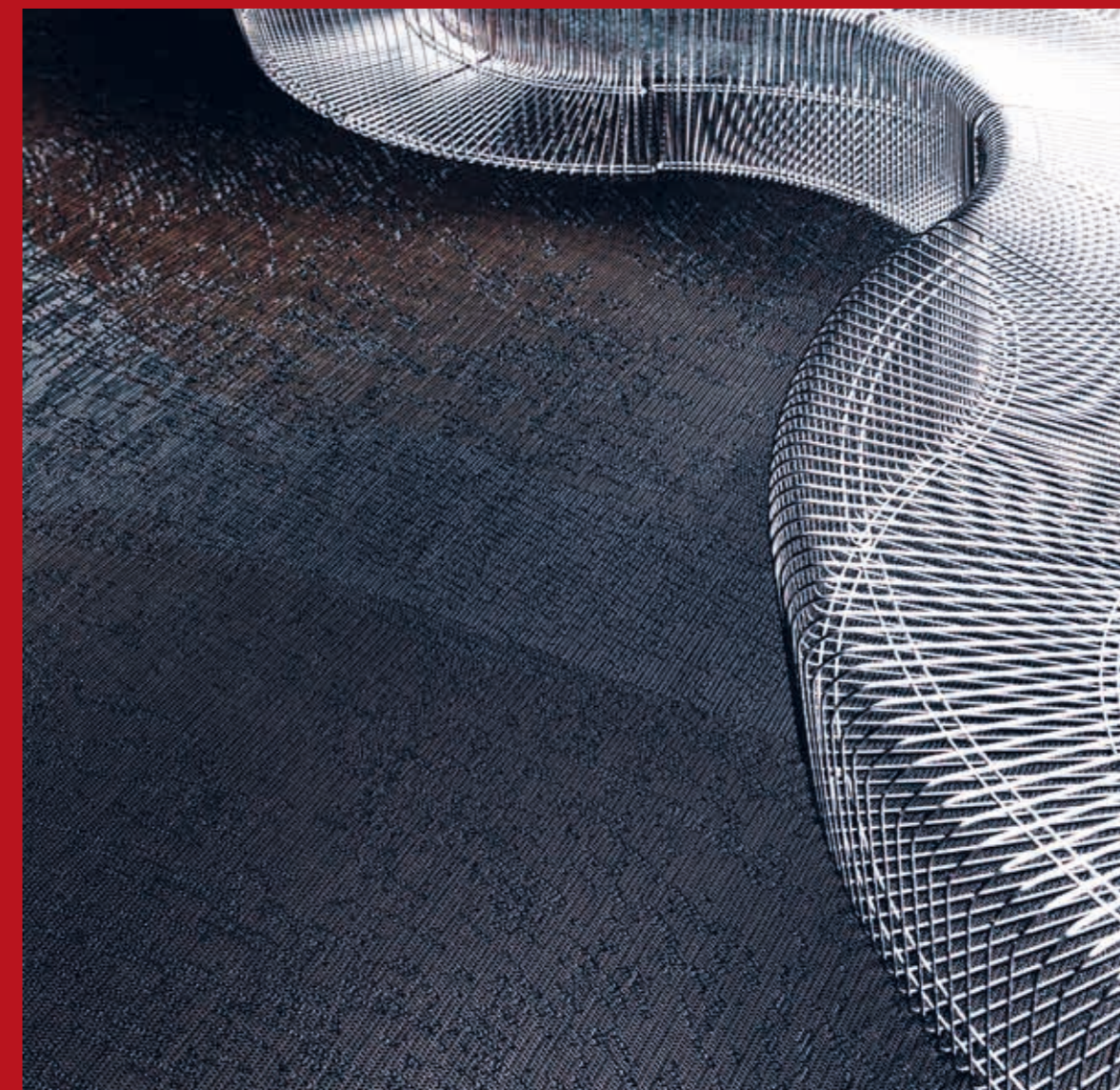








Bolon Truly; #3 / 100%



Bolon Truly; #4 / PRECIS.

Our new 2022 collection – Truly – is an innovation. Revealing five different patterns – singular faces of Bolon – the collection plays with spatial perception creating an experience of architecture extraordinaire. Magnified formations, color effects and hyper texture; directing light and working with scale in a way we've not seen before.

- A bold collection in five designs, each with its unique pattern and expression
- Environmental certifications and declarations are available
- 15-year warranty
- Durability class 33 – Heavy Commercial

AVAILABLE IN:*



Rolls



Tiles



Acoustic flooring



Bolon Studio™

*Options available vary in this collection, see fold out for more information.

GRAPHIC



Bolon Graphic; Gradient Grey



Bolon Graphic; Texture Black

Graphic is our designer flooring solution created for high-traffic environments such as offices, retail outlets and other busy, public spaces. The Graphic collection is particularly well-suited for spaces where a contemporary look and high-performance must be harmonized with a classic, sober ambience.

- Smooth, low friction surface
- Available in five patterns
- Environmental certifications and declarations are available
- 15-year warranty
- Durability class 33 – Heavy Commercial

AVAILABLE IN:*

-  Rolls
-  Tiles

**Options available vary in this collection, see fold out for more information.*



Bolon Silence; Sense, Balance, Ocular, Visual, Gracious



Bolon Silence; Illuminate, Sense, Ocular

Silence is a sober, elegant flooring collection characterized by warm colors. The mesmerizing patterns draw inspiration from historical textiles and traditional, wooden parquet floors.

- Unique weaving technology creates 3D effects, depth and structure
- Environmental certifications and declarations are available
- 15-year warranty
- Durability class 33 – Heavy Commercial

AVAILABLE IN:*



Rolls



Tiles



Planks



Acoustic flooring



Bolon Studio™

*Options available vary in this collection, see fold out for more information.



Bolon Emerge; Drift, Sway



Bolon Emerge; Swirl

Emerge is a collection revealing new neutral colors as adaptable as nature itself. It brings large flooring surfaces to life by captivating all the natural changes in light and shadow. Developed to complement the materials most used by architects, the Emerge collection offers something that is anything but basic.

- Neutral and easily matchable color palette
- Environmental certifications and declarations are available
- 15-year warranty
- Durability class 33 – Heavy Commercial

AVAILABLE IN:*



Rolls



Tiles



Acoustic flooring



Bolon Studio™

**Options available vary in this collection, see fold out for more information.*



Bolon Create; Facio



Bolon Create; Comar, Facio, Converso, Inducto

Create's profiled yarn and textured surface produce exciting 3D effects, reflecting light and adding visual dynamism to any interior environment. Colors shift between shades of light and dark, depending on the sight line, how the light falls, and how the flooring is laid.

- 3D and light-reflecting qualities bring flooring to life
- Environmental certifications and declarations are available
- 15-year warranty
- Durability class 33 – Heavy Commercial

AVAILABLE IN:*



Rolls



Tiles



Acoustic flooring



Bolon Studio™

**Options available vary in this collection, see fold out for more information.*

ARTISAN



Bolon Artisan; Denim



Bolon Artisan; Quartz


Artisan respectfully draws inspiration from traditional craftsmanship, combining classic patterns and design of the past with the exciting, new possibilities offered by modern weaving technology.


- Strong, vibrant colors
- Environmental certifications and declarations are available
- 15-year warranty
- Durability class 33 – Heavy Commercial

AVAILABLE IN:*

 Rolls

 Tiles

 Acoustic flooring

 Bolon Studio™

**Options available vary in this collection, see fold out for more information.*



Bolon Elements; Oak



Bolon Elements; Ash

The Elements collection features a balanced, natural look, drawing inspiration from nature. With its calm base colors and Scandinavian feel, the simple versatility of Elements makes it an exceptional neutral backdrop for diverse interiors.

- Calm, base color palette
- Environmental certifications and declarations are available
- 15-year warranty
- Durability class 33 – Heavy Commercial

AVAILABLE IN:*



Rolls



Tiles



Acoustic flooring



Bolon Studio™

**Options available vary in this collection, see fold out for more information.*



Bolon Now Copper







Bolon Now; Titanium etc.

The Now collection adds an element of opulence and drama to its surroundings. A metallic shimmer is incorporated in the weave, resulting in visually powerful interior environments with an expressive, yet uniform whole.

- Basic floor with metallic design tones
- Visually powerful
- Environmental certifications and declarations are available
- 10-year warranty
- Durability class 32 – General Commercial

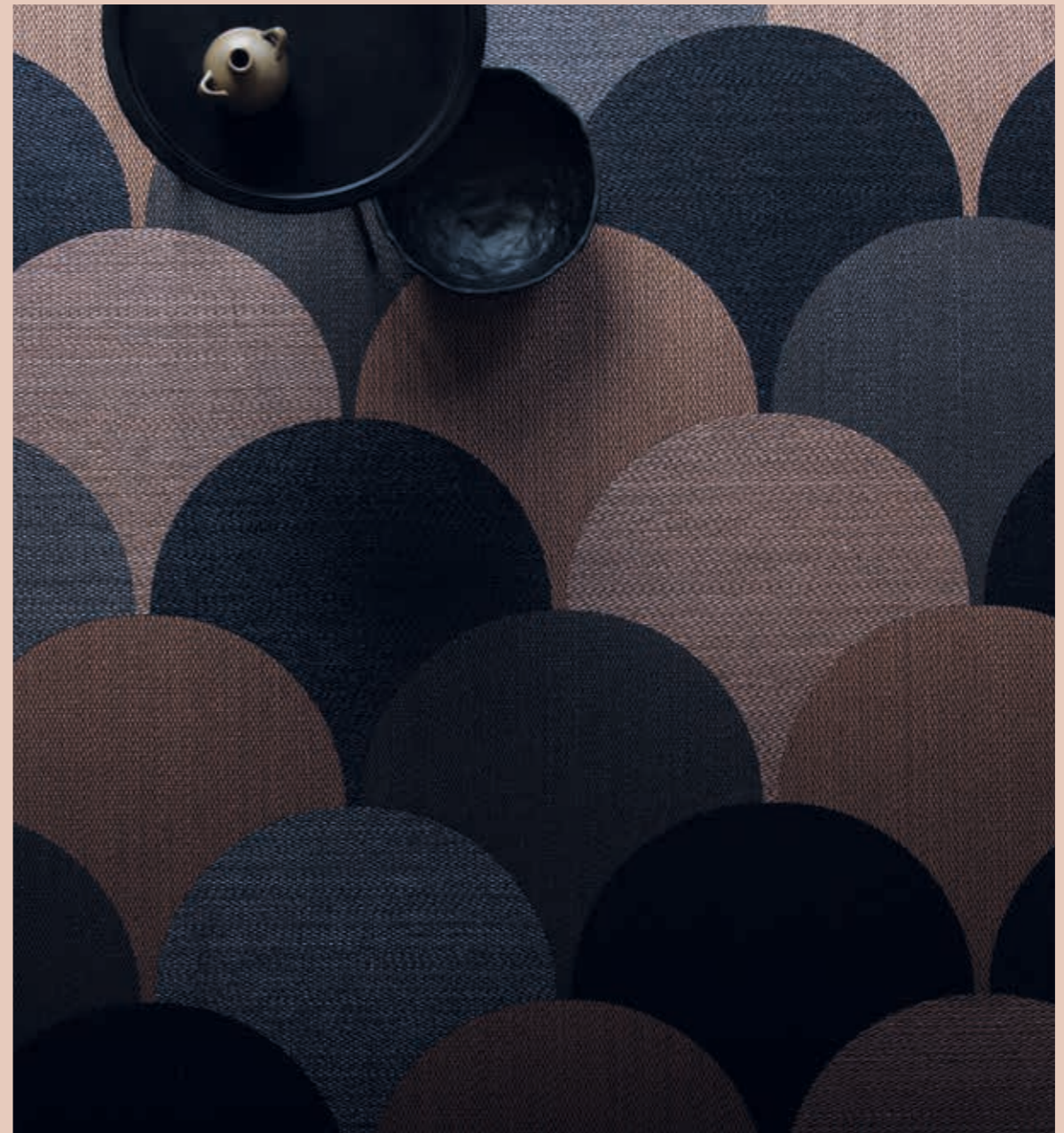
AVAILABLE IN:*

-  Rolls
-  Tiles
-  Acoustic flooring
-  Bolon Studio™

**Options available vary in this collection, see fold out for more information.*



Bolon Ethnic; Gabna



Bolon Studio Scale Ethnic; Gabna, Abisko etc


In the north of our home country, Sweden, the culture, natural light and beauty are quite unique. Ethnic captures these characteristics, featuring patterns reminiscent of earth, stone and rock, with a futuristic metallic shimmer that suggests cold, Nordic light.


- Harmonizes with a multitude of interior styles
- Environmental certifications and declarations are available
- 10-year warranty
- Durability class 32 – General Commercial

AVAILABLE IN:*

 Rolls

 Tiles

 Acoustic flooring

 Bolon Studio™

*Options available vary in this collection, see fold out for more information.

BOTANIC



Bolon Botanic; Kale, Viola, Thyme



Bolon Botanic; Sage

Botanic reflects the amazing diversity and detail of our planet's organic architecture. The collection's color range, inspired by the vegetable kingdom, features muted, rich earth tones along with bright accents in yellow and green.

- Remarkable textile-like feel
- Environmental certifications and declarations are available
- 10-year warranty
- Durability class 32 – General Commercial

AVAILABLE IN:*



Rolls



Tiles



Acoustic flooring



Bolon Studio™

**Options available vary in this collection, see fold out for more information.*



Bolon Bkb; Sisal Natur Black, Sisal Plain Black, Sisal Plain Mole, Sisal Plain Beige, Sisal Plain Sand



Bolon Studio™ Link; Bkb; Sisal Plain Mole, Sisal Plain Beige, Sisal Plain Black

Bkb was our first collection and is enduringly popular. The collection offers a broad, neutral color palette - a feature that optimizes design versatility - combined with a classically stylish pattern and a soft, textile feel, resulting in timeless flooring.

- Neutral palette optimizes design versatility
- Environmental certifications and declarations are available
- 10-year warranty
- Durability class 32 – General Commercial

AVAILABLE IN:*



Rolls



Tiles



Acoustic flooring



Bolon Studio™

**Options available vary in this collection, see fold out for more information.*



Bolon By Patricia Urquiola; Light Sashiko



Bolon By Patricia Urquiola; Sage Sashiko

A high-end design collection adding warmth and personality to hotels, offices and other premises. The collection is designed to moderately emphasize the flooring's woven structure and the tradition of stitching techniques.

AVAILABLE IN:

Q Rolls

- Architectural sophistication meets textiles softness
- Environmental certifications and declarations are available
- 15-year warranty
- Durability class 33 – Heavy Commercial



Missoni Home; Flame Patch Black



Missoni Home; Fireworks White

Our long collaboration with acclaimed Italian design house Missoni has proven to be a match made in design heaven. Within this collection you'll find visual warmth, exclusivity and Missoni's signature design touch – presented in a rich, vibrant color palette.

- Takes design cues from Missoni's classic patterns – including the signature Zigzag
- Available in five patterns
- Environmental certifications and declarations are available
- 15-year warranty
- Durability class 33 – Heavy Commercial

AVAILABLE IN:*



Rolls



Tiles



Acoustic flooring

**Options available vary in this collection, see fold out for more information.*



Bolon By Jean Nouvel Design; No. 04





Bolon By Jean Nouvel Design; No. 06

Our collaboration with Jean Nouvel Design has led to this architect-driven flooring concept covering six color signatures. The flooring amplifies the interior geometry, making it possible to experiment with the layout and the natural flow within an interior space.

- Handmade industrial flooring product
- Environmental certifications and declarations are available
- 15-year warranty
- Durability class 33 – Heavy Commercial

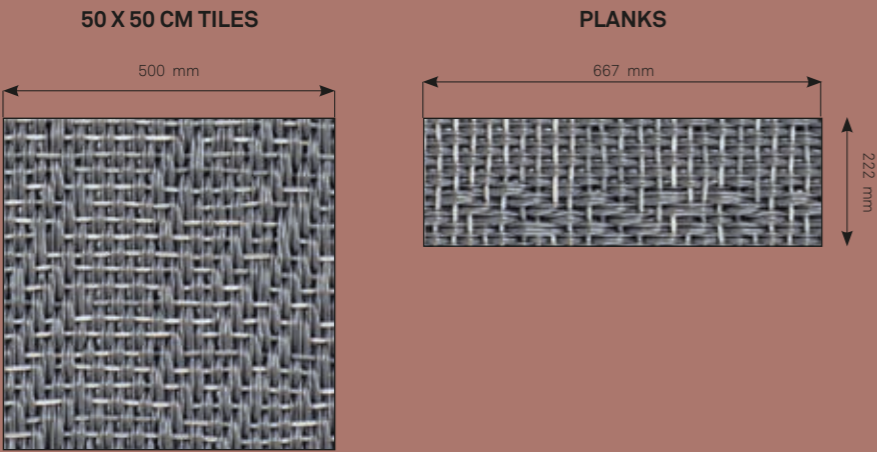
AVAILABLE IN:*

-  Rolls
-  Tiles

**Options available vary in this collection, see fold out for more information.*

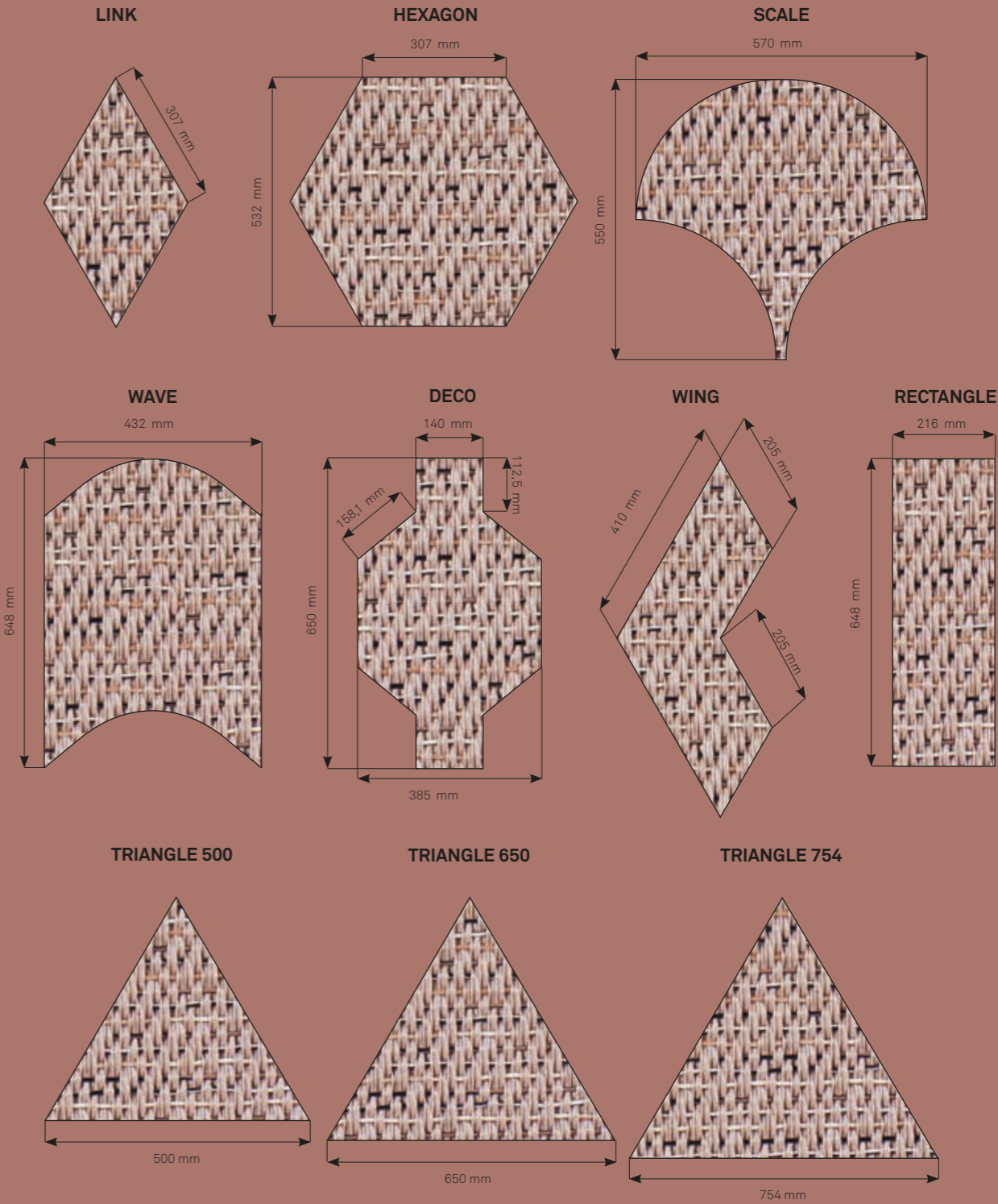
DESIGNING WITH BOLON TILES

Bolon Tiles optimize the creative potential of our flooring. Available in both original format and as part of our popular Bolon Studio concept, their aesthetic versatility lets architects and interior designers devise more specific solutions for their projects.



BOLON ORIGINAL TILES

Our original tiles – in other words, tiles not offered under the Studio concept – are readily available as stock items. They are slightly thicker than our Bolon Studio™ tiles and can be ordered in 50 x 50 cm format and as planks (in the Silence collection). As well as offering exciting design opportunities, our original tiles are also an excellent solution for raised floors.



BOLON STUDIO

Although they are not created solely for this purpose, Bolon Studio tiles are perfect for highlighting smaller or separate floor areas by giving them a distinctive, standout look. These products are a made-to-order item as they are created as required for specific projects. Bolon Studio tiles are supplied in the following forms – **Deco, Hexagon, Rectangle, Scale, Triangle, Wing, Wave** and **Link**.

Within the range, both strict graphic forms and softer, more organic shapes are featured. Together with innovative use of the selected collections available in the concept, this wide spectrum of forms allows for the creation of a huge diversity of interiors. Furthermore, mixing and matching patterns and experimenting with different laying styles can also lead to unique and visually exciting results.



DESIGN WITH BOLON BY YOU

We know that every interior project is unique and sometimes requires tailored solutions. That is why we created Bolon By You: a design system that gives you the freedom to easily create personalised flooring. The concept allows you to create designs by combining roll or tile patterns with warp and weft colors.

STEP BY STEP

- Choose a pattern, both rolls and tiles are available
- Choose from 4 available warp colors (the vertical yarn)
- Choose from 12 available weft colors (the horizontal yarn)
- Order a sample of your personalized design at [bolon.com](https://www.bolon.com)
- Lets architects and designers create personalized flooring
- Weave on demand
- Environmental certifications and declarations are available
- 15-year warranty
- Durability class 33 – Heavy Commercial

AVAILABLE IN:*



Rolls



Tiles



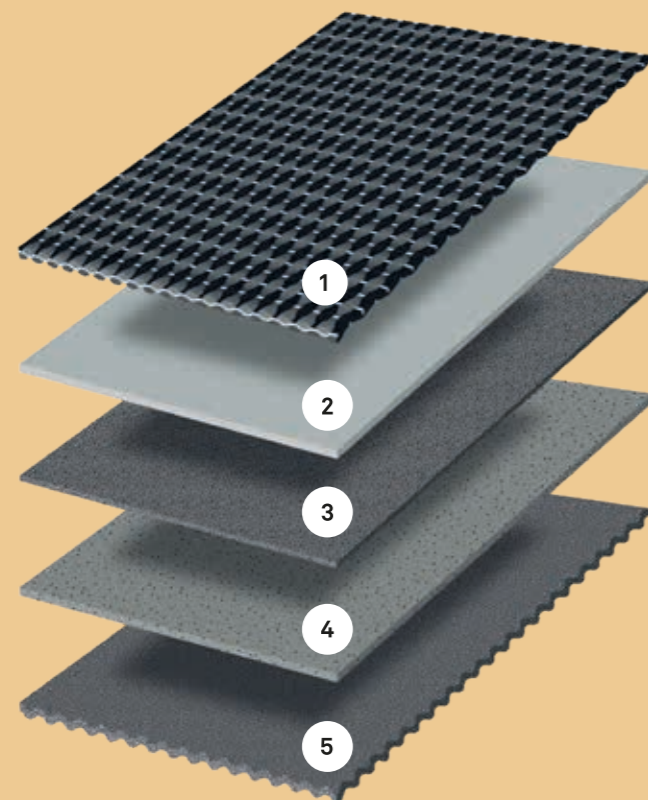
Acoustic flooring

Bolon By You; Stripe Black Steel Grey



ACOUSTIC FLOORING

With the improved sound insulation layer, our floors are becoming an even better choice for premises where sound matters. A perfect feature for hotel bedrooms, busy lobbies, crowded office spaces, libraries and other high foot traffic areas.



LAYERS

1. The weave layer consists of vinyl warp and weft yarns tightly woven together
2. The upper backing layer gives the flooring its fire-protective properties
3. The middle backing layer consists of glass fiber giving the flooring dimension and stability
4. The bottom backing layer contains recycled material
5. The sound insulation layer consist of a felt material that helps to reduce sound and noise traveling in the construction



IMPACT NOISE REDUCTION

A floor's ability to reduce impact noise is defined by the measured sound level in the room below. The given value describes the reduction of transferred noise. By incorporating a felt underlay, the impact noise reduction of our acoustic flooring has been improved to 21-22 dB.



SOUND INSULATION FROM 90% RECYCLED PET BOTTLES

Bolon acoustic flooring is partly made from recycled production waste and PET bottles. The sound insulation layer consists of up to 90% recycled polyester fibers which are sourced from used PET bottles.



15% SOUND ABSORPTION

The sound absorption coefficient defines a flooring's ability to absorb airborne sound. With Bolon acoustic flooring this coefficient is 0.15, meaning that the flooring absorbs 15% of the sound energy. The result is a room with a positive acoustic performance, providing a more comfortable indoor environment.



ADDING ON TO BOLON PERFORMANCE

The acoustic flooring does not compromise the durability, fire resistance, warranty, water-resistance, or overall performance – it only adds to the list of unique characteristics of Bolon flooring while also increasing underfoot comfort and softness.

CLIMATE. CIRCULAR. PROMISE.

SUSTAINABILITY

As a business, Bolon has always taken pride in doing things in our own way. As each generation of the company has left its mark on our history, we can look back on decades of development and sustainable innovation with a great sense of achievement.

All our collections contain recycled material – our integrated recycling plant help us to increase the levels of recycled material year by year. In our production, we only use renewable energy with zero climate footprint. Our additives are non-hazardous, and the PVC material is environmentally labeled.

In 2020, we set bold new climate and circularity goals which we have chosen to call our 'Promise'.

OUR PROMISE

By 2028, all the flooring we produce will be 50% circular.

By 2028, we will halve the climate impact of our flooring.



PRODUCTION

All our products are produced in Sweden with low emissions and a closed-loop water cooling system. Our integrated recycling plant gives us a great opportunity to include recycled material in all products and continuously increase the percentage used.

CIRCULARITY

All our collections and products contain an average of 25% recycled material, according to ISO 14021. In our acoustic flooring, 90% of the felt layer consists of recycled material.

CLIMATE

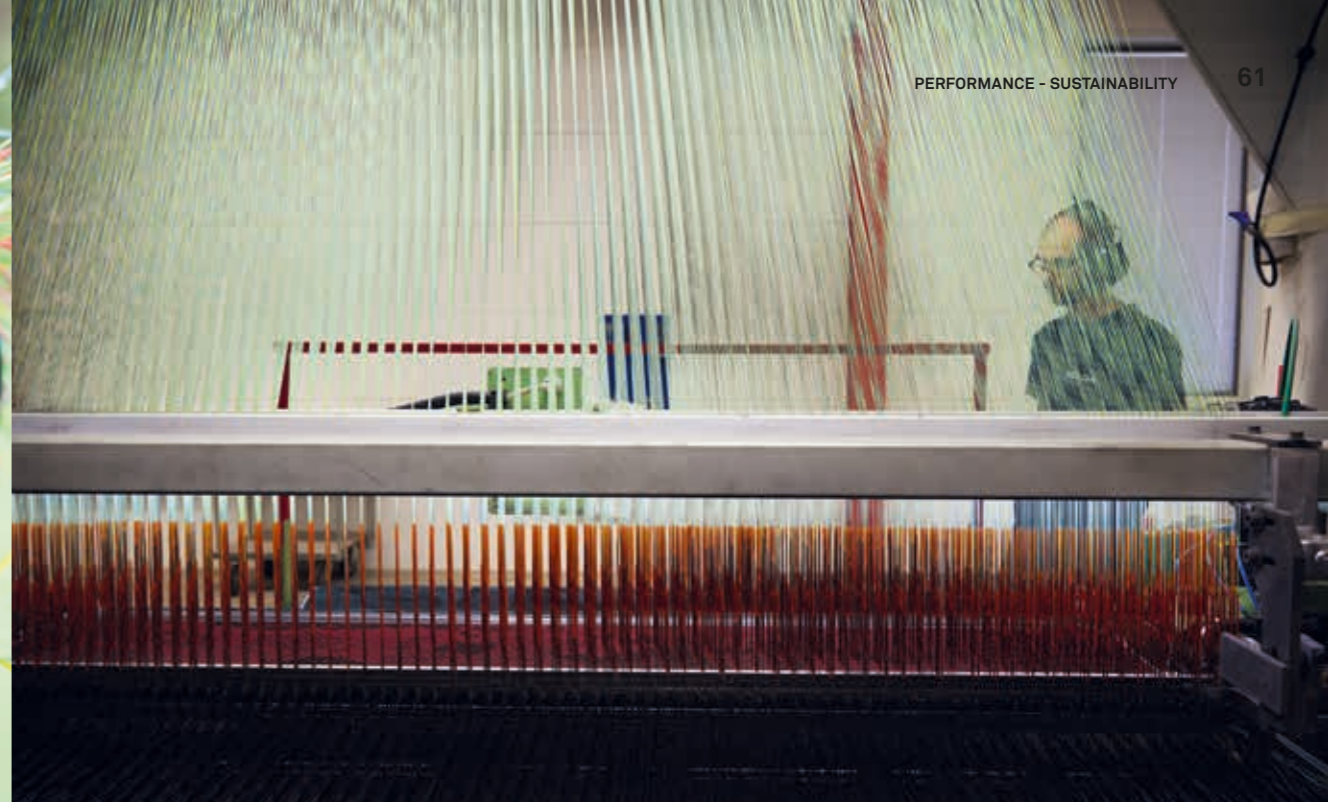
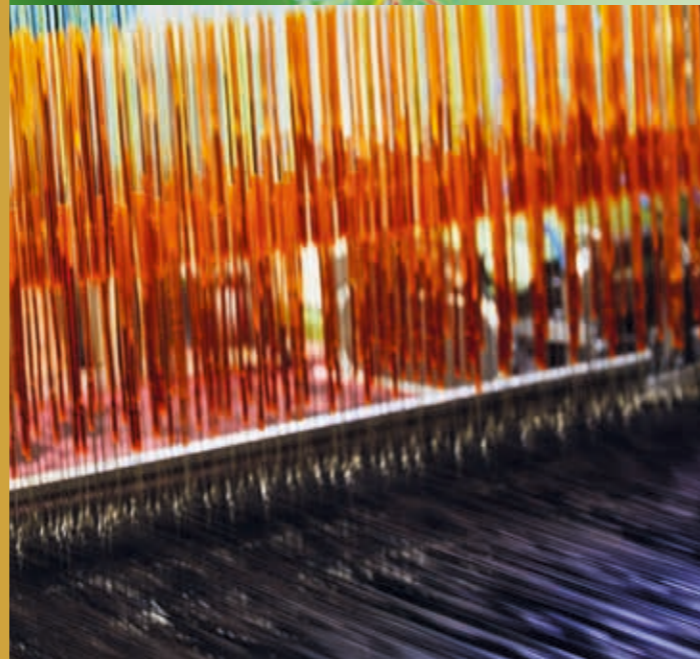
We have third-party verified EPDs (Environmental Product Declarations), which provide transparency and comparability of our products' climate impact. Our factory runs on 100% renewable energy making our production climate neutral.

MATERIAL

The materials used in our floors and rugs are 74% fossil-free and consist of chalk, PVC, glass fibre and non-hazardous additives. We only use environmental labelled PVC. The PVC compound, thread and foil are primarily sourced within 250 km from the production plant.

CHEMICALS AND VOC EMISSIONS

Our products are free from heavy metals and hazardous phthalates and fulfills strict requirements of VOC (Volatile Organic Compound) emissions during use.



BEAUTY WITH BENEFITS

Bolon is a Swedish design brand specialized in innovative flooring and rug solutions for public spaces. All products are developed and produced in Sweden, focusing on sustainability, functionality, and design.

DESIGN

Design is at our core, and we are always on the look-out for new trends. We find our inspiration in art, fashion, photography, and interior design and use it to create high-end design products. Our flooring and rug collections are all results of a combination of aesthetics and functionality. All products are based on the characteristic Bolon yarn and the woven three-dimensional structure. It allows for combinations of collections, colors, rolls and tiles, making design possibilities nearly endless.

SUSTAINABILITY

Our production site in Ulricehamn is climate-neutral using only renewable energy and has an integrated recycling plant. Here, production waste is being recycled into new backing layers. Our PVC material is solely bought from Best Environmental Practice PVC suppliers.

DURABILITY

Bolon flooring is durable, strong and retains its appearance without flattening, making it a perfect solution for high-intensity commercial environments. All collections have durability class 32 or 33 and come with a 10- or 15-year warranty.

CLEANABILITY

Bolon floors are impervious and resilient against spills. The compact weave prevents dirt and debris from penetrating the surface. Daily cleaning can easily be performed with a vacuum cleaner, brush, mop, and clean water. Most often, no harmful chemical agents are required. If needed, floors can be disinfected. If so, make sure to rinse away all chemicals to avoid any damage to the floor.

INDOOR ENVIRONMENT

Bolon floors are inherently hypoallergenic which ensures better indoor air quality. The floors are also free from hazardous plasticizers and stabilizers.

Bolon Studio Triangle Truly; #5 / I SEE YOU.





Bolon Elements; Cork

DESIGNING FOR THE LONG RUN

The unique layered structure of Bolon flooring provides its impressive durability qualities. The top layer is made from Bolon yarn, creating the characteristic Bolon look and the flooring's resilience. The backing layers enhance the product performance, adding stability and improving its imperviousness.

SUITABLE FOR COMMERCIAL ENVIRONMENTS

A Bolon flooring is both durable and resilient, following ISO 10874 standard. Depending on product use, classification is 32 (General commercial) or 33 (Heavy commercial).

LONG SERVICE LIFE

A Bolon flooring retains its appearance without flattening, making it a perfect solution for high-intensity commercial environments. Our products are designed and produced to last throughout their long service lives.

WARRANTY

All flooring collections come with a 10- or 15-year warranty depending on the product.

WATER RESISTANCE

Bolon flooring is water resistant and does not allow water to penetrate. However, it shall not be used as a waterproofing/sealing layer in areas like bathrooms.

FIRE RATING

Bolon flooring complies with the requirements in the European standard EN 13501-1 (fire classification of construction products) and has achieved the rating just below non-combustible material. This classification is called BflS1 and includes both fire and smoke production. Bolon flooring is approved for emergency exit routes in Sweden.

ACOUSTICS

The impact sound insulation varies for different products from 9 dB to 14 dB. With the improved Bolon acoustic flooring, the impact noise reduction is 21 – 22 dB. Make sure to read the designated product specification.

NON-SLIP

CE certification for the floor includes a slip resistance assessment. The lowest value for materials used in public areas is 0.3. Bolon's collections have a slip resistance value of >0.5.

ANTI-STATIC

Bolon flooring does not generate a static charge, but it cannot be classified as an electrostatic-dissipating floor. Our flooring has been tested and fulfils the requirements of the European Directive EN 1815.

Bolon By You Geometric; Beige Liquorice Grey



A CLOSE UP OF THE PRODUCT

Bolon flooring is structured with four levels: one top-weave and three backing layers. The four layers provide the product with its unique qualities. The weave layer is formed by vinyl warp and weft threads woven together tightly. The variations of the warp and weft yarn together with the different weaving techniques gives Bolon flooring its vast design possibilities.

THE WARP

The warp is the longitudinal vinyl yarn that together with the weft forms the weave. Two different kinds of warp can be used in Bolon flooring: extruded or folded.

The extruded warp can either be elliptical or profiled and is used in the jacquard loom, it comes in solid monochrome colors .

The folded warp comes in solid monochrome or metallic shades and is used in the dobby loom.



THE WEFT

We extrude our own Bolon weft yarn at our production plant in Ulricehamn. Each thread is extruded into a mono or co-ex line, each with polyester core. There are four different kinds of Bolon weft yarns: monochrome, mixed mono, glossy or mixed glossy, all of which can be produced in any color.

THE WEAVE

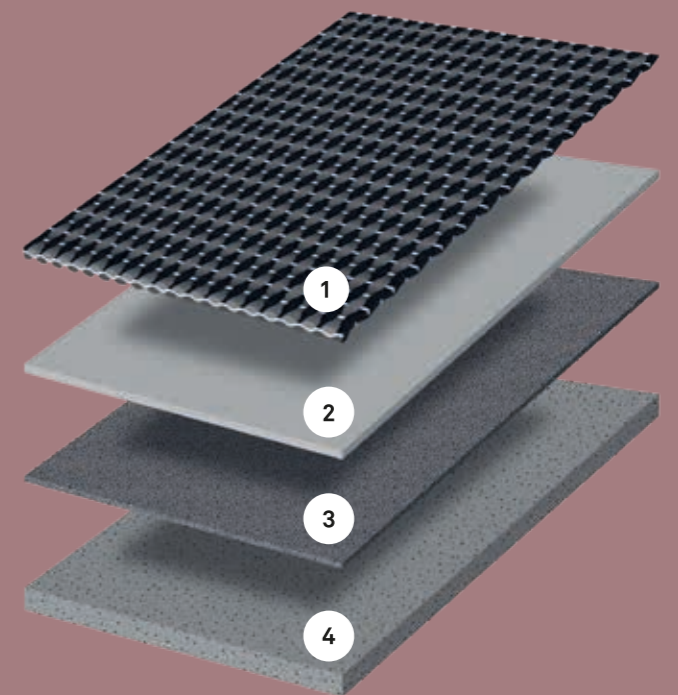
At Bolon, we use two types of looms: the dobby and the jacquard. The dobby loom is less complex, creating plain surfaces without any patterns. The result is a classic woven expression.

The more advanced jacquard loom allows us to create both unpatterned surfaces as well as bold patterns, making design possibilities nearly endless.



LAYERS

1. The weave layer consists of vinyl warp and weft yarns tightly woven together
2. The upper backing layer gives the flooring its fire-protective properties
3. The middle backing layer consists of glass fiber giving the flooring dimension and stability
4. The bottom backing layer defines the thickness of the flooring and contains recycled material.





EASY TO CLEAN

Bolon flooring is simple to clean and maintain. Thanks to the tightly woven vinyl-structure and the layers of solid backing, the flooring is impervious to liquids and resilient enough for almost any spill or mess.

EASY TO CLEAN AND MAINTAIN

One of Bolon flooring's key benefits is its ease in cleaning and maintaining. The vast majority of cleaning can be accomplished with a vacuum cleaner and scrubbing brush.

ECO-FRIENDLY CLEANING

During Bolon flooring's long product lifecycle, 99% of the cleaning can be accomplished with clean water.

HYPOALLERGENIC

Bolon flooring is impervious to liquids and has no exposed fibres where dust, dirt or debris can hide. The result is flooring with less risk for mold spores to thrive. Our flooring is recommended by the Norwegian Asthma and Allergy Association as they contribute positively to indoor air quality.

CLEANING METHODS

We recommend vacuum cleaning for daily maintenance and mechanical cleaning (roller brush or orbot method) at the frequency required by the specific environment. Smaller areas can be cleaned manually with micro fiber cloth and scrubbing brush. (See Support page on bolon.com for more information)

RESTORING – ZEROING

A badly maintained flooring, or a flooring that has become extremely dirty can in most cases be restored to an almost new condition.

DISINFECTION

If needed, the flooring can be disinfected. If so, make sure to rinse away all chemicals to avoid any damage to the floor.

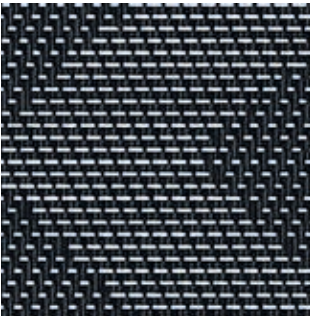
STAIN REMOVAL

With Bolon flooring, stain removal is straight forward. Most of the times, all you need is warm water, a scrubbing brush and a dry cloth. It is best if the stains are treated right away. Before you use a stain remover, make sure it can be used on vinyl flooring.

STAIN	CLEAN WITH
Chocolate, fat, juice, cream, coffee, beer, wine	Hot water + strong cleaner
Asphalt, oil, shoecream, chalk, ink	Chemically pure petrol
Water-based glue	Hot water
Solvent-baset glue	Chemically pure petrol
Marks from shoes	Rub dry with cloth
Chewing gum	Hot steam or freeze spray
See our instructional films about cleaning on bolon.com	

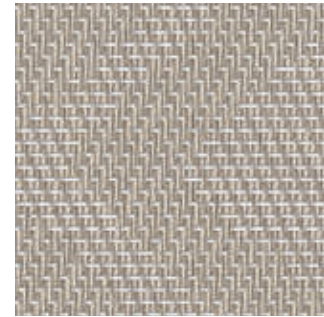


MISSONI HOME
ZIGZAG BLACK



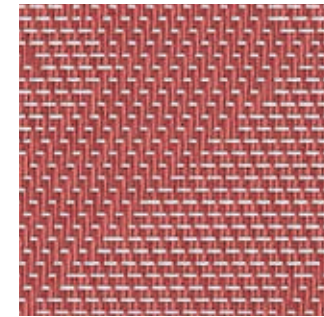
104 269

MISSONI HOME
ZIGZAG SAND



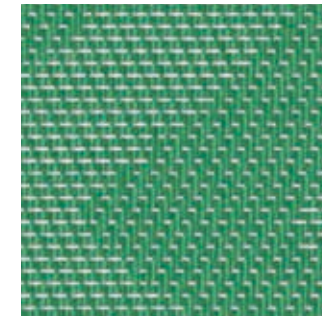
104 278

MISSONI HOME
ZIGZAG RED



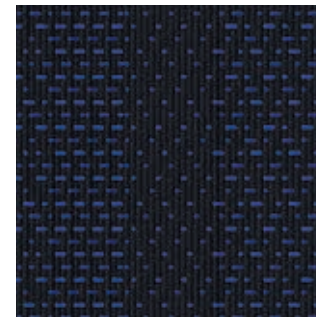
109 600

MISSONI HOME
ZIGZAG GREEN



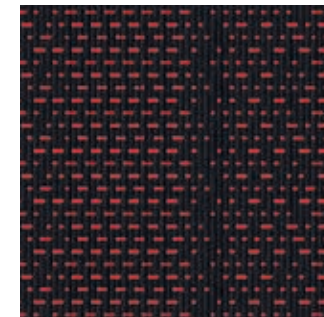
109 599

BOLON BY JEAN NOUVEL
NO. 01



106 010 106 017

BOLON BY JEAN NOUVEL
NO. 02



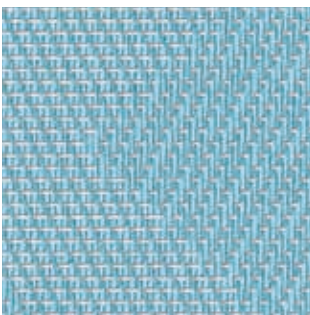
106 009

BOLON BY JEAN NOUVEL
NO. 03



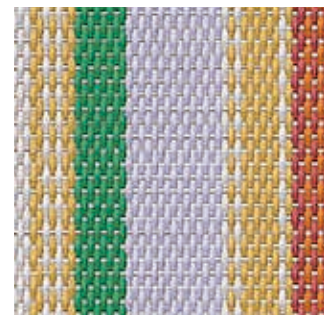
106 011

MISSONI HOME
ZIGZAG TURQUOISE



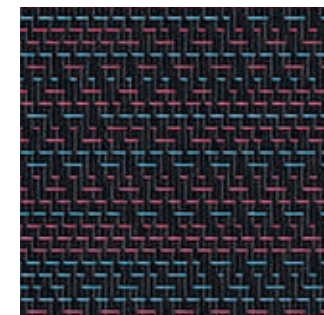
109 598

MISSONI HOME
TRINIDAD



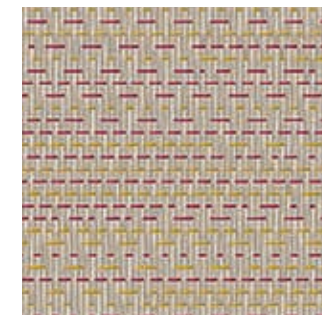
109 574

MISSONI HOME
FIREWORKS BLACK



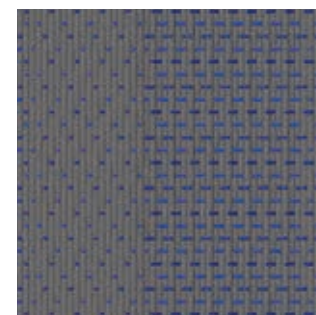
109 579

MISSONI HOME
FIREWORKS WHITE



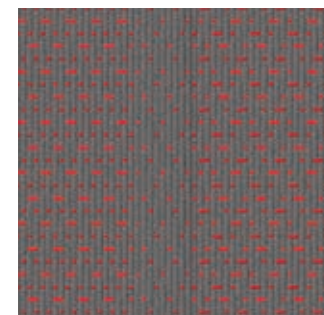
109 583

BOLON BY JEAN NOUVEL
NO. 04



106 013

BOLON BY JEAN NOUVEL
NO. 05



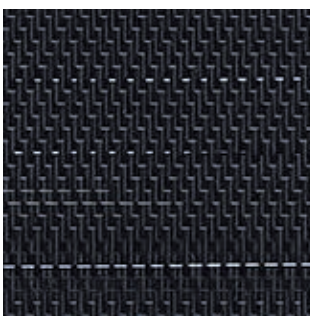
106 012

BOLON BY JEAN NOUVEL
NO. 06



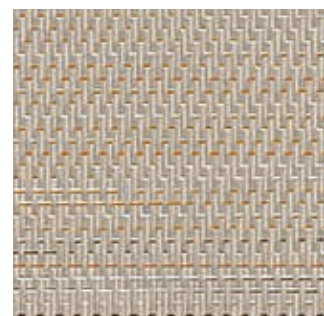
106 014 106 018

MISSONI HOME
FLAME PATCH BLACK



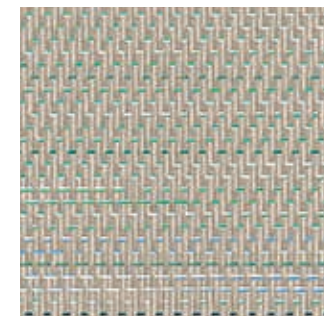
109 611

MISSONI HOME
FLAME PATCH WOOD



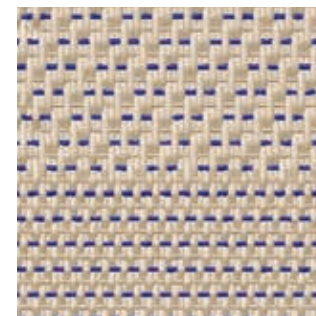
109 615

MISSONI HOME
FLAME PATCH LAGOON



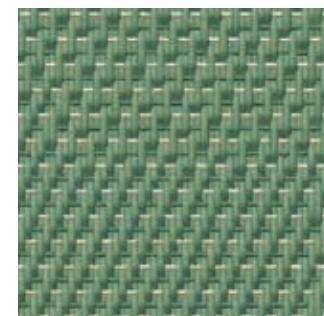
109 613

BOLON BY PATRICIA URQUIOLA
LIGHT SASHIKO



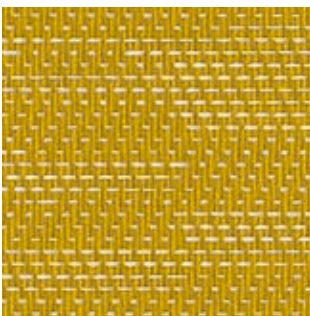
111 776

BOLON BY PATRICIA URQUIOLA
SAGE SASHIKO



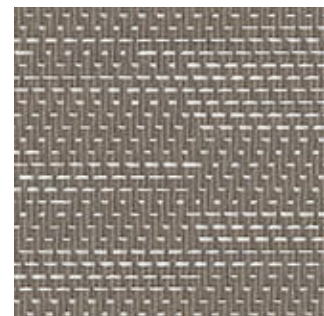
111 777

MISSONI HOME
FLAME PINEAPPLE



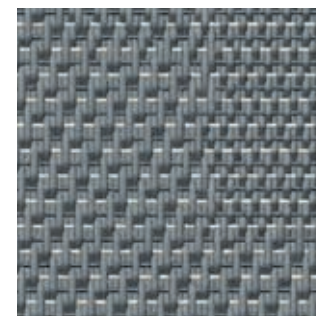
109 603

MISSONI HOME
FLAME STONE



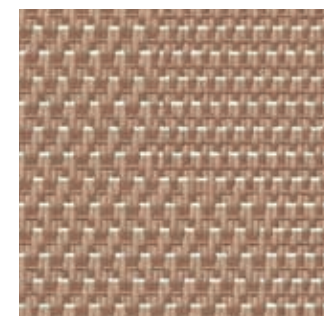
103 349

BOLON BY PATRICIA URQUIOLA
GREY SASHIKO



111 778

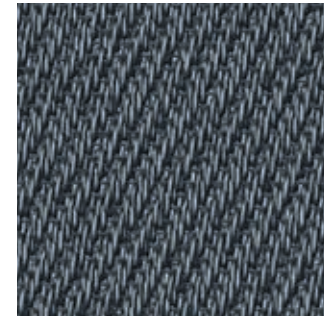
BOLON BY PATRICIA URQUIOLA
NUDE SASHIKO



111 779

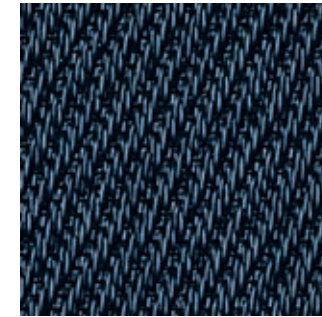
GENERAL COMMERCIAL USE

NOW
ANTHRACITE



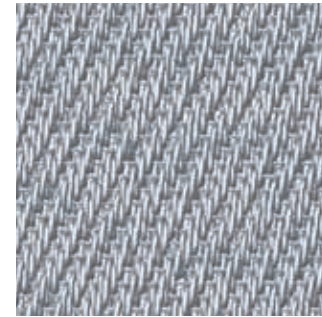
102 769 102 819

NOW
TITANIUM



108 076 108 343

NOW
SILVER



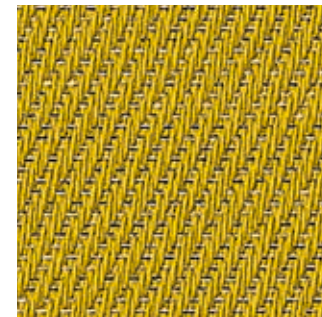
102 768 102 818

NOW
CHAMPAGNE



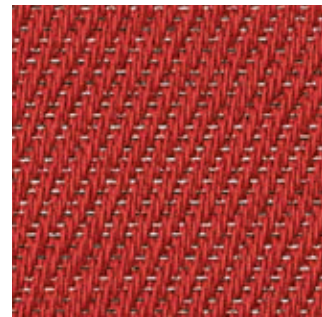
102 767 102 817

BOTANIC
VIVA



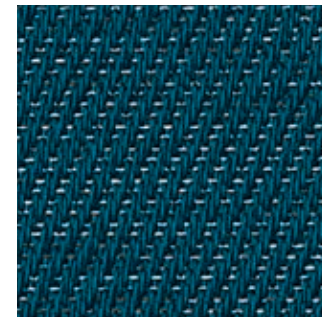
102 668 102 820

BOTANIC
TULIP



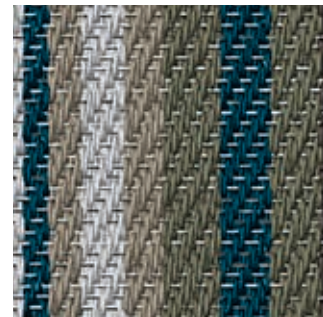
108 082 108 102

BOTANIC
KALE



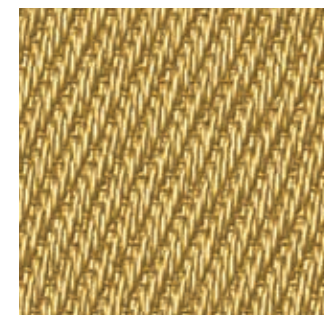
108 079 108 099

BOTANIC
GARDEN



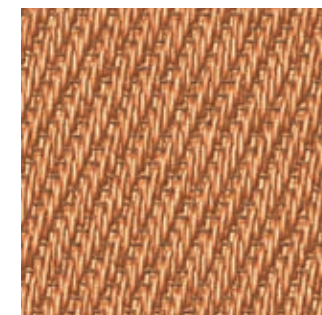
108 084

NOW
BRASS



108 078 108 341

NOW
COPPER



108 077 108 342

ETHNIC
ABISKO



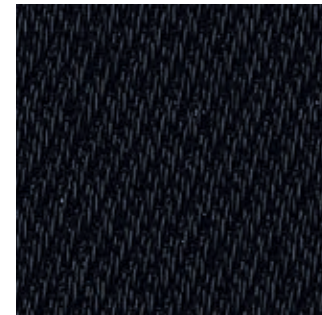
102 763 102 807

ETHNIC
GABNA



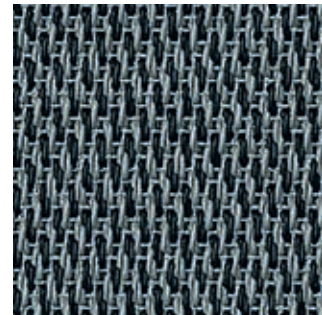
103 562

BKB
SISAL PLAIN BLACK



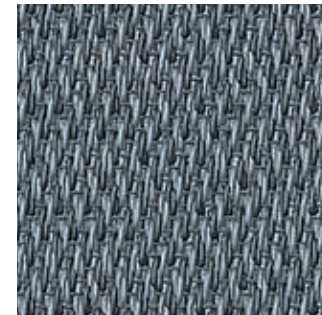
102 753 102 798

BKB
METALLIC ALPHA



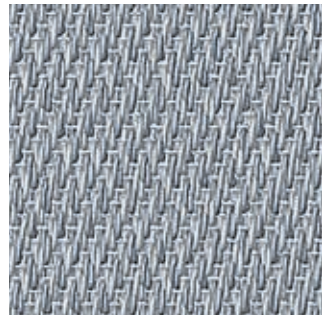
102 757 102 801

BKB
SISAL PLAIN GRANITE



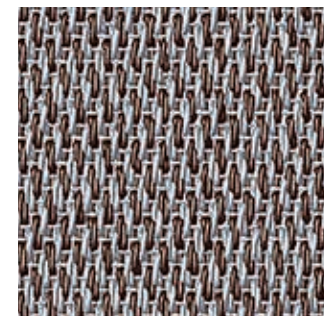
102 751 102 796

BKB
SISAL PLAIN STEEL



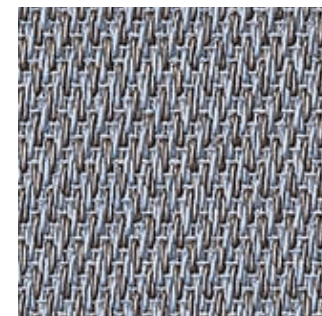
102 752 102 797

ETHNIC
SAIVO



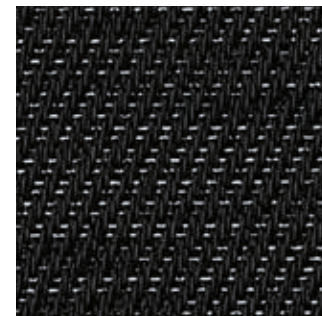
103 559

ETHNIC
KAISE



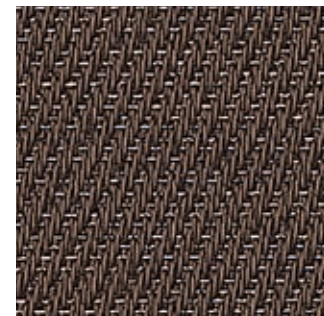
102 762

BOTANIC
VIOLA



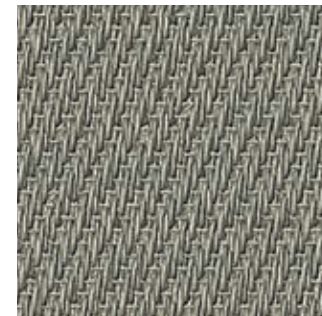
108 083 108 103

BOTANIC
TILIA



102 671 102 823

BKB
SISAL PLAIN MOLE



102 749 102 794

BKB
SISAL PLAIN SAND



102 748 102 793

BKB
SISAL NATUR BLACK



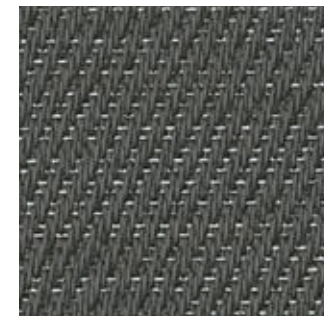
102 755 102 799

BKB
SISAL PLAIN BEIGE



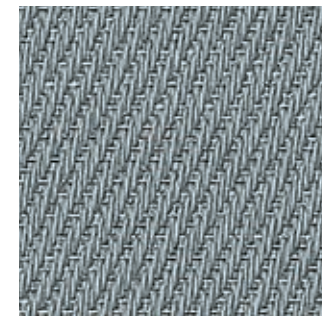
102 745 102 791

BOTANIC
THYME



108 061 108 101

BOTANIC
OSIER



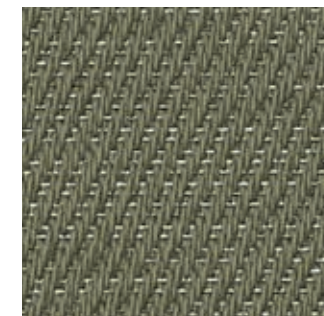
102 674 102 826

BOTANIC
CILIA



102 673 102 825

BOTANIC
SAGE

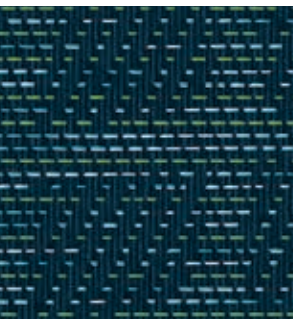


108 080 108 100



HEAVY COMMERCIAL USE

TRULY
#1 / ANYTHING EVERYTHING.



113 613

TRULY
#2 / DISRUPT AND DISCOVER!



113 614



113 622



113 622



113 622

TRULY
#3 / 100%



113 615



113 623

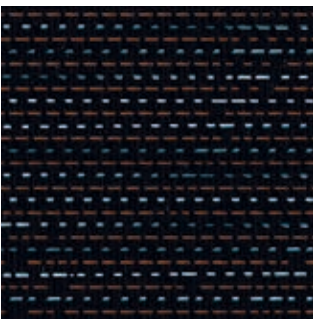


113 623



113 623

TRULY
#4 / PRECIS.



113 616



113 624

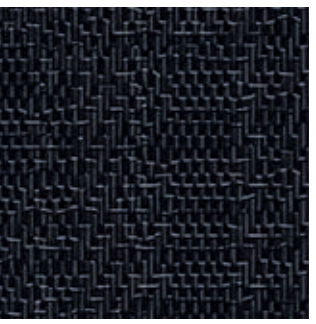


113 624



113 624

SILENCE
PAUSE



108 025



108 036

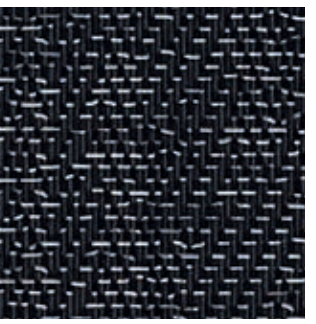


108 040



108 038

SILENCE
EMOTION



108 026



108 037

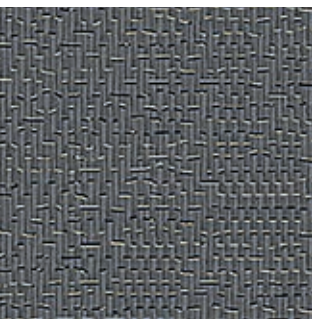


108 041



108 039

SILENCE
BALANCE



106 223



103 706

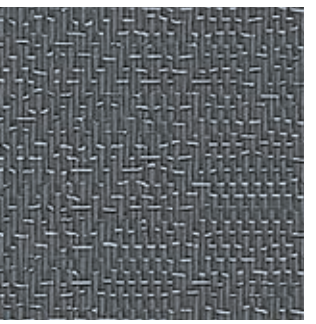


103 763



103 757

SILENCE
SENSE



106 222



103 705

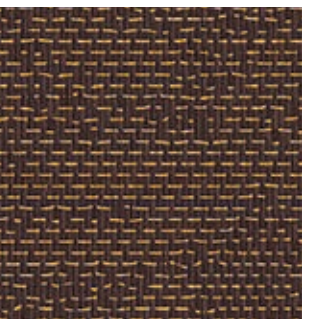


103 764



103 758

CREATE
FACIO



105 066



105 078

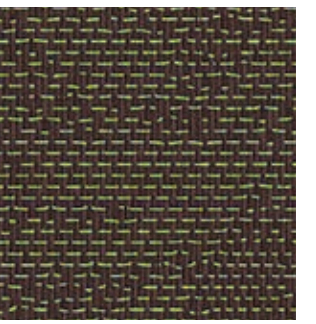


105 078



105 078

CREATE
CONVERSO



105 060



105 075

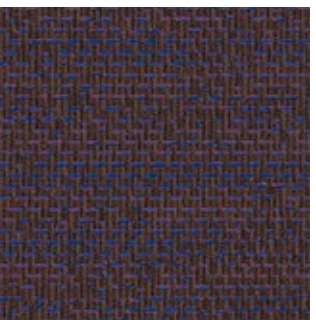


105 075



105 075

CREATE
FABRICO



105 062



105 076

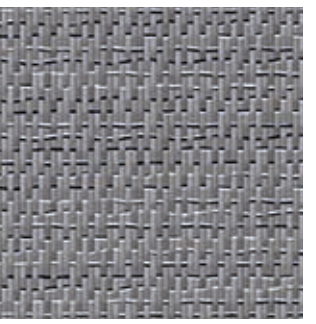


105 076



105 076

ELEMENTS
WOOL



108 275



108 295

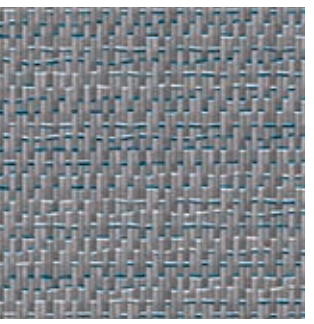


108 295



108 295

ELEMENTS
FLINT



108 277



108 297

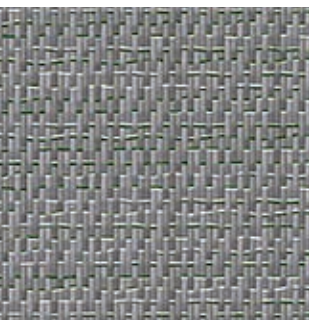


108 297



108 297

ELEMENTS
MARBLE



108 278



108 298

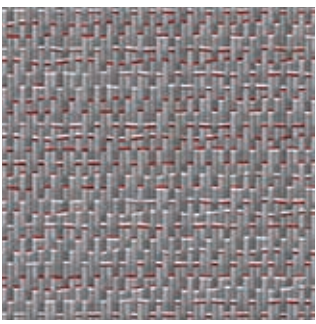


108 298



108 298

ELEMENTS
WALNUT



108 276



108 296



108 296



108 296

TRULY
#5 / I SEE YOU.



113 617



113 625

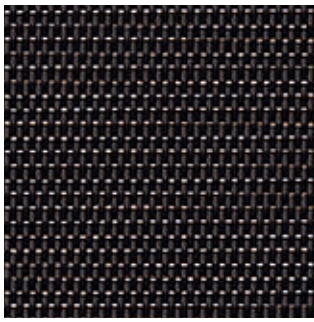


113 625



113 625

GRAPHIC
ETCH



102 773



102 815

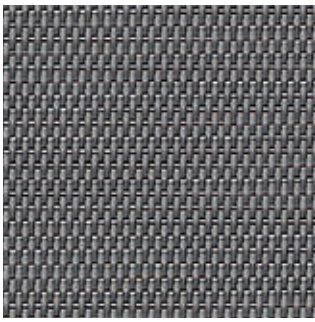


102 815



102 815

GRAPHIC
STRING



102 772



102 814

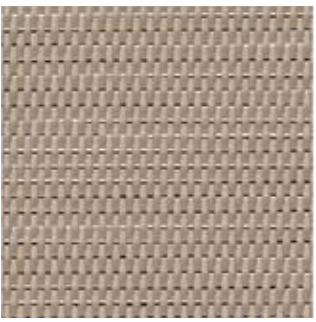


102 814



102 814

GRAPHIC
MACHE



102 770



102 812

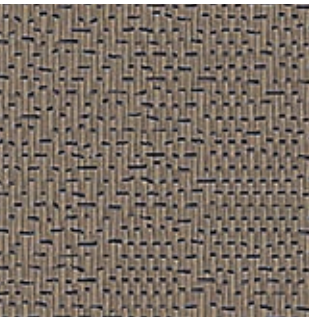


102 812



102 812

SILENCE
VISUAL



106 221



103 704

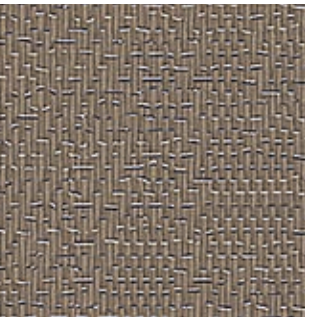


103 765



103 758

SILENCE
GRACIOUS



106 220



103 703

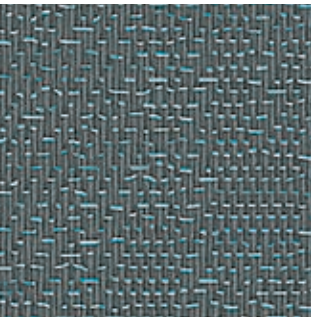


103 766



103 760

SILENCE
ILLUMINATE



106 065



103 707

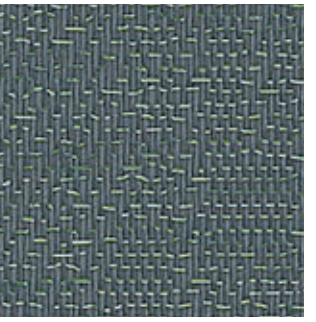


103 761



103 755

SILENCE
OCULAR



106 224



103 708

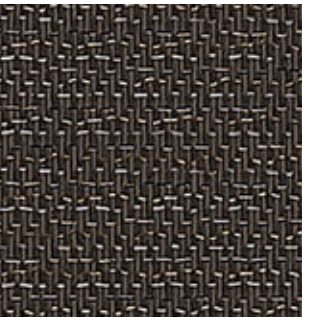


103 762



103 756

ARTISAN
COAL



102 740



102 780

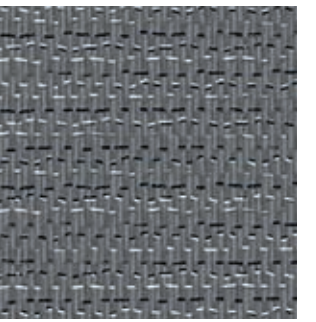


102 780



102 780

ARTISAN
SLATE



102 739



102 789

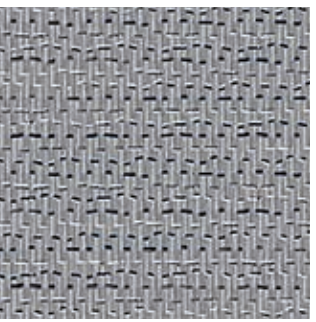


102 789



102 789

ARTISAN
CONCRETE



106 022



106 031

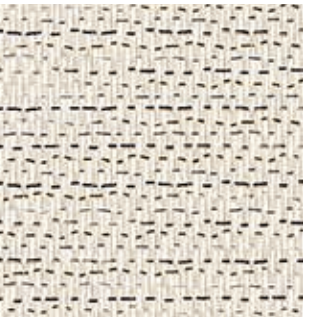


106 031



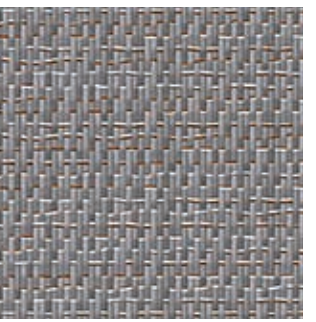
106 031

ARTISAN
IVORY



103 591

ELEMENTS
SILK



108 279



108 299



108 299



108 299

ELEMENTS
BIRCH



108 270



108 290

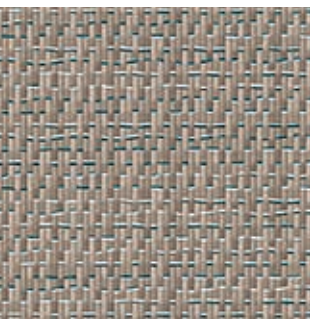


108 290



108 290

ELEMENTS
LINEN



108 272



108 292



108 292

